

LAKE NONA FACT SHEET



ABOUT

Planned and developed by the Tavistock Group, Lake Nona is one of the fastest-growing and most innovative communities in America. Located in Orlando, Florida, the 17-square-mile community has established a new standard of living with groundbreaking initiatives that integrate technology, mobility, health and wellbeing.

The smart and connected community's advanced infrastructure and commitment to collaboration has drawn visionary companies and entrepreneurs to join its living lab environment accelerating economic growth and opportunity. Lake Nona's attractive business ecosystem is enhanced by a thriving cultural landscape defined by iconic architecture and engaging public art installations, miles of trails and walkable green spaces, weekly signature events and endless shopping, dining and entertainment options.

MISSION STATEMENT

To create an extraordinary environment that inspires human potential through collaboration, innovation and customer devotion.

Quick Facts

- Among the top-selling U.S. master-planned communities (*RCLCO 2021*)
- 17 square miles, 11,000 acres, 44 square kilometers – ¼ size of Washington D.C., ¾ size of Manhattan
- 22,000 residents, 12,000 employees, 16,000 students
- Median age: 37
- Millions of square feet in planned residential and commercial construction for the next five years
- Education obsessed from pre-K to PhD/MD
- Contiguous to Orlando International Airport and a short drive from the busiest spaceport in the world, the nation's highest concentration of simulation and training businesses and Fortune 500 companies

Wellbeing by Design

- Lake Nona Performance Club provides a tailored approach to whole-person health thanks to partners like Dr. Deepak Chopra and Russell Wilson
- Designed to encourage an active lifestyle with more than 44 miles of trails, dozens of parks, and 1,000 community events each year

Built for Business

- Home to businesses big and small including Disney, Johnson & Johnson, KPMG, University of Central Florida, U.S. Tennis Association, Verizon and a burgeoning community of entrepreneurs
- Commercial clusters focused on health and wellbeing, training and human performance, aviation and aerospace, education and entertainment
- Hub for leading health and life sciences companies, academic programs and research organizations (often called "Medical City")

Smart City

- A living lab where companies, organizations and entrepreneurs test new ideas
- Verizon 5G Innovation Hub and community wide high-speed 5G network
- First gigabit community in Florida with 30,000+ miles of fiber cable providing high-speed internet
- Country's largest and longest-running single site autonomous vehicle fleet
- Lake Nona Wave Hotel is the most technologically advanced hotel in the world

Located in Orlando, Florida

- Among the top 10 fastest-growing U.S. metros of the past decade (*U.S. Census 2020*)
- Home to the world's 7th busiest airport that served more than 40 million passengers in 2021 (*Airports Council International*)
- Most-visited city in the U.S. with more than 59 million visitors in 2021 (*Visit Orlando*)
- Modeling, simulation and training capital of the world with \$6B+ in annual simulation contracts (*National Center for Simulation 2019*)
- 550,000+ higher-education students within 100 miles of Orlando (*IPEDS, National Center for Education Statistics 2021*)
- Fastest growing city for entrepreneurs in the U.S. (*LinkedIn State of Entrepreneurship Report 2021*)



LAKE NONA IS

EDUCATION OBSESSED

With three universities and colleges having a major physical presence in Lake Nona (and more in the works), as well as A-rated public schools and several early childhood education centers, Lake Nona is home to thousands of students.

QUICK FACTS

- 16,000+ students on-site
- Lake Nona's culture of collaboration provides learning experiences from pre-K to PhD/MD
- 550,000+ college students enrolled within a 100-mile radius

EARLY EDUCATION

- Amazing Explorers
- Goddard School
- The Learning Experience
- Primrose School of Lake Nona
- YMCA Lake Nona



Early Childhood Education

PUBLIC SCHOOLS

- A-rated Orange County Public Schools (OCPS)
 - NorthLake Park Community School (K-5) shares its home with the Lake Nona YMCA Family Center
 - First in the country and a national model for providing local children with built-in after-school programming
 - Laureate Park Elementary School
 - Village Park Elementary School
 - Lake Nona Middle School
 - Lake Nona High School and Collegiate Academy
 - The Collegiate Academy is a dual enrollment program that allows high school students to earn their AA degree at Valencia College, adjacent to the high school campus
 - Plans for three new OCPS sites to open in the next 10 years

HIGHER EDUCATION

- Four colleges and universities within 5 miles:
 - University of Central Florida (UCF) Academic Health Sciences Campus
 - College of Medicine: First accredited university-based College of Medicine in Orlando
 - Burnett School of Biomedical Sciences
 - College of Nursing (coming soon)
 - University of Florida (UF) Research & Academic Center
 - College of Pharmacy
 - Institute for Therapeutic Innovation
 - Valencia College Lake Nona Campus
 - Inter American University of Puerto Rico (coming soon)



Valencia College Lake Nona Campus



UCF College of Medicine



UF Research & Academic Center

LAKE NONA IS A LIVING LAB COMMUNITY

Lake Nona's focus on inspiring human potential has made the community a globally recognized living lab where companies, organizations and entrepreneurs convene to initiate and test big ideas. The 17-square-mile community, with its diverse population and visitor base, provides a real-world testbed for companies looking to evaluate and deploy innovative solutions at scale.

HIGHLIGHTS INCLUDE:

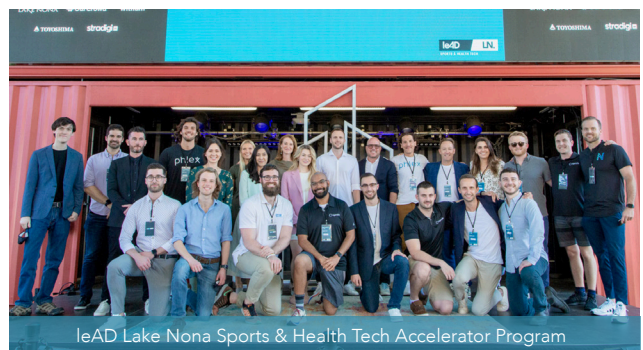
- Launched the region's first autonomous shuttle program with Beep Mobility Solutions (headquartered in Lake Nona), which is now the largest and longest-running single site autonomous fleet in the U.S. Since launching in 2019, the shuttles have safely carried 47,000+ passengers.
- At the Verizon 5G Innovation Hub, innovators can test and refine 5G-powered ideas across a variety of industries including healthcare, technology, autonomous mobility, education, retail and sports
- In the leAD Lake Nona Sports & Health Tech Accelerator, promising early-stage tech start-ups from around the world are testing and refining their ideas
- WHIT (Wellness Home built on Innovation and Technology) is a first-of-its-kind healthy home designed to test the latest health solutions and technologies in a real-life environment
- The Lake Nona Life Project, a long-term community health study, examines the interactions between lifestyle and health
- Cultivated a first-of-its-kind partnership between a public school and the YMCA creating a new national model where one entity provides shared resources for students
- Partnership with Hitachi America to better understand, improve and optimize movement throughout the community



Verizon 5G Innovation Hub

"We're creating Innovation Hubs powered by Verizon 5G Ultra Wideband to serve as launch pads for high-impact, transformational experiences and are excited to see the new 5G use cases that will be developed in Lake Nona."

Sampath Sowmyanarayan
Chief Revenue Officer, Verizon Business



leAD Lake Nona Sports & Health Tech Accelerator Program



Move Nona: The Region's First Autonomous Shuttle Network



WHIT: The Wellness Home Built on Innovation and Technology

LAKE NONA IS

REDEFINING MOBILITY

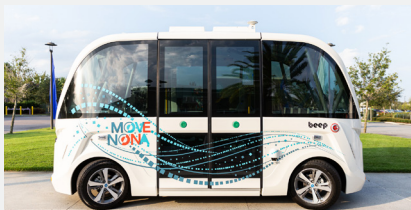
Contiguous to Orlando International Airport and less than 30 minutes from the world's busiest spaceport, Lake Nona is building a first-of-its-kind mobility network to integrate multimodal systems into an urban fabric.

This network is built to accommodate pedestrians, cyclists (both casual and commuter), electric-assist personal vehicles, the country's largest and longest-running autonomous vehicle fleet and all-electric, city-to-city flight.

BOLD MOBILITY PROJECTS

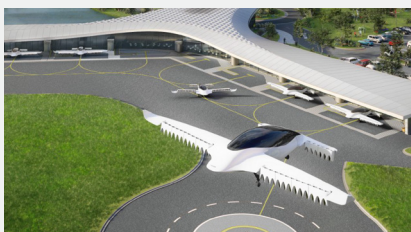


AEROTROPOLIS: Lake Nona is part of an emerging aerotropolis – an airport-centric economic development region that harnesses the opportunities an aerospace (airport/spaceport) brings to a region. Contiguous to each other, Lake Nona and the Orlando International Airport (MCO) encompass 37 square miles of land under control of just two entities, the Greater Orlando Airport Authority and Lake Nona's developer and land owner, Tavistock Group.



AUTONOMOUS MOBILITY: Lake Nona is a home to the largest and longest running single-site autonomous fleet in the U.S., operated by the Lake Nona-headquartered Beep Mobility Solutions.

- Since launching the region's first autonomous shuttle program in September 2019, the program has safely carried 47,000+ passengers
- The autonomous mobility program has improved public safety and quality of life for residents and visitors by further enabling modal choice while reducing the burdens of commuting and congestion-related emissions
- What started with two shuttles on a single route, has now expanded to include a fleet of eight shuttles that connect 10 key destinations



VERTIPOINT: The future of transportation is taking flight in Lake Nona. By 2025, Lake Nona will be home to the nation's first high-speed, electric air mobility hub servicing all-electric, vertical take-off and landing (eVTOL) aircraft manufactured by Lilium. Known as the Lake Nona Vertipoint, the first-of-its-kind aviation facility will serve as hub of the Florida network accessible to nearly every major city in the state in less than one hour.



GREENLINK PARK: The linear park is planned to feature multiple trails, pocket parks and space for activity that will stretch more than 100 feet wide along a half-mile path from Lake Nona neighborhoods to the Town Center. The park's unique design supports multimodal mobility lanes including dedicated space for autonomous vehicles, bikes and pedestrian paths.

LAKE NONA IS A HEALTHY COMMUNITY

Recognized by the Global Wellness Institute as “the most sophisticated example in the world of what master planning for wellness can accomplish,” Lake Nona is a model for deliberate wellbeing planning activated by a globally recognized hub for health and life sciences innovation.

FOCUS ON COMMUNITY WELLBEING

Health and wellbeing are purposefully incorporated into every aspect of Lake Nona’s master plan:

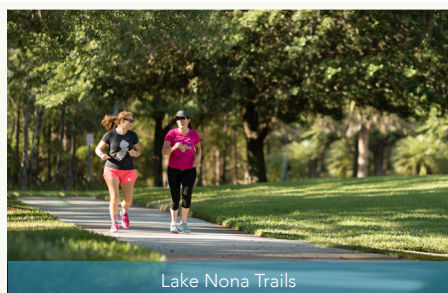
- More than 44 miles of sidewalks and trails connect neighborhoods, pocket parks and community gardens designed to bring people together
- Nearly 1,000 community events each year encourage activity and social connectivity
- View Smart Windows predictively tint in response to outdoor conditions offering health benefits for building occupants and the environment
- The annual Lake Nona Impact Forum convenes hundreds of global thought leaders from business, academia, government and industry sectors who are driving creative, innovative health and wellness solutions
- Home to WHIT (Wellness Home built on Innovation and Technology), a first-of-its-kind prototype healthy home designed to test the industry’s latest health solutions and technologies in a real-life environment
- Lake Nona Life Project, a long-term community health and wellness study, examines the associations between lifestyles and health among Lake Nona residents and workers
- The 130,000-square-foot Lake Nona Performance Club provides a tailored approach to whole-person health with unique experiences like the Chopra Mind-Body Zone designed by Dr. Deepak Chopra and mindset training from quarterback Russell Wilson’s Limitless Minds

HEALTH AND LIFE SCIENCES HUB

In less than a decade, Lake Nona’s 650-acre health and life sciences campus (often called “Medical City”) has grown to welcome some of the nation’s top hospitals, universities, research institutions and health and life science companies providing a unique foundation to reinvent healthcare.

An East Coast hub for health innovation, the health and life sciences hub is anchored by:

- University of Central Florida (UCF) Academic Health Sciences Campus
 - College of Medicine: First accredited university-based College of Medicine in Orlando
 - Burnett School of Biomedical Sciences
 - College of Nursing (coming soon)
- UCF Lake Nona Cancer Center
- UCF Lake Nona Hospital
 - 64-bed, three-story acute care adult hospital
- University of Florida (UF) Research & Academic Center and College of Pharmacy
- Orlando Veterans Affairs Medical Center
 - 65-acre campus serves more than 100,000 local Veterans
 - SimLEARN National Training Center
- Nemours Children’s Hospital
 - First stand-alone children’s hospital in Orlando
- GuideWell Innovation Center
 - Medical innovation hub for start-ups and health care entrepreneurs
- Johnson & Johnson Human Performance Institute global headquarters



Lake Nona Trails



UCF College of Medicine



Annual Run Nona 5K Event

LAKE NONA IS A GREAT PLACE TO LIVE

One of the fastest-growing communities in America, Lake Nona welcomes hundreds of new families each year, and it's easy to see why. Lake Nona is home to thoughtfully designed neighborhoods, dozens of parks and playgrounds, weekly community events, top-rated education facilities, walkable shopping, dining and entertainment options and innovative business clusters.

QUICK FACTS

- 22,000+ residents
- Median age: 37
- 86% of residents have a minimum of a four-year degree, 41% have a graduate degree (2021)
- 82% have a combined household income of \$100,000+ (2021)
- One of the top-selling U.S. master-planned communities and the top-selling in Orlando (RCLCO 2021)
- More than 5,000 homes built since 2005
 - 685 new homes sold in 2021
- Average new home price in Lake Nona is \$521,000 (2021)
- More than a dozen neighborhoods represent a variety of home types and price points from micro apartments and townhomes to single-family homes and large estates
- Multi-generational living options include an assisted-living facility and 55+ neighborhood

UNMATCHED ENTERTAINMENT

- Boxi Park is Central Florida's first open-air entertainment park built using repurposed shipping containers featuring different restaurant concepts, playgrounds, beach volleyball courts, dog park and weekly live entertainment
- Drive Shack golf entertainment destination features 90 playing bays, restaurant and bar
- Nona Adventure Park is an outdoor watersports venue with on-water cable system, inflatable obstacle course, on-land climbing tower, pro shop with equipment rentals and cafe
- XL Soccer athletic complex features indoor multi-surface fields that can be used to play soccer, lacrosse, flag football and volleyball
- U.S. Tennis Association (USTA) National Campus, the largest tennis campus in the world with nearly 100 courts and family programming
- Lake Nona Golf & Country Club's Tom Fazio designed course hosts multiple amateur and professional tournaments each year



Laureate Park Neighborhood



Community Playground

COMMUNITY HEALTH BY DESIGN

"Lake Nona is the most sophisticated example in the world of what master planning for wellness can accomplish," according to the Global Wellness Institute.

- 40% of Lake Nona has been reserved for open green space including City and community parks, more than 44 miles of trails and 1,000 acres of lakes and waterways
- Residents and employees can participate in a longitudinal health study to examine the interactions between lifestyle and health
- Nearly 1,000 community events each year encourage social connectivity
- Vibrant public art program stimulates learning and engagement through murals, sculptures, digital media and live performances
- The 130,000-square-foot Lake Nona Performance Club fitness center provides a tailored approach to whole-person health for members of all ages and skill levels

LAKE NONA IS A SMART CITY

In Lake Nona, our goal is to create a community that's not only smart, but smart with a purpose.

We know that when people come together, amazing things happen. In Lake Nona, we strive to implement technology that encourages collaboration. By providing the environment and tools that fuel collaboration, we empower residents, businesses and visitors to create smart, purpose-driven solutions that remove friction, enhance the human experience and solve urban-scale problems.

IDEAL LOCATION

- Located in Orlando, Florida, the country's most-visited destination
- Contiguous to Orlando International Airport, creating a 37-square-mile aerotropolis with Lake Nona
- A short drive from the busiest spaceport in the world, the nation's highest concentration of simulation and training businesses at Central Florida Research Park and a growing list of Fortune 500 companies
- A living lab environment that is home to a variety of settings, uses and industries to test and refine ideas from residential and recreational to healthcare and hospitality

CONNECTIVITY

- First gigabit community in Florida with the ability to grow and 30,000+ miles of fiber cable delivering high-speed internet directly to residents and businesses
- Building out a community-wide 5G network in collaboration with Verizon
- In the Lake Nona Verizon 5G Innovation Hub, innovators test and refine their ideas across a variety of industries including healthcare, technology, autonomous mobility, education, retail and sports
- Home to the leAD Lake Nona Sports & Health Tech Accelerator designed to attract the most promising tech start-ups from around the world to develop 5G-powered solutions



leAD Lake Nona Sports & Health Tech Accelerator

BUILT ENVIRONMENT

- The world's most technologically advanced Lake Nona Wave Hotel is equipped with voice-automated in-room controls, View Smart Windows, TOTO smart toilets and a custom mobile app



Wave Hotel: Largest hotel in the world with View Smart Windows

- Multiple buildings incorporate View Smart Windows that predictively tint in response to outdoor conditions while also offering health benefits for occupants and the environment
- Buildings use choice architecture to encourage healthy habits like taking the stairs
- Cultural home to dozens of public art pieces that feature different art forms including sculptures, murals, digital art and live performances to create engaging experiences and stimulate learning

MOBILITY

Lake Nona is leading the way for alternative and sustainable mobility from the ground to the sky

- Home to the country's largest and longest-running single-site autonomous vehicle fleet operated by Beep Mobility Solutions
 - Autonomous shuttles run daily throughout the community on fixed routes
- Future home of the country's first vertiport hub for electric aircraft capable of helicopter-style take-off and landing (by 2025)
 - Partnership with Lilium, a Munich, Germany-based aircraft manufacturer
- Re-imagining the future of mobility with Greenlink Park: a linear park with lanes for micro-mobility, autonomous vehicles and pedestrians anchored by a waterway

LAKE NONA IS A

SPORTS & PERFORMANCE MAGNET

Lake Nona is a sports and human performance magnet with resources for everyone, from elite athletes to corporate executives, to perform at the top of their game. World-class training facilities include a championship golf course, the U.S. Tennis Association National Campus, KPMG Lakehouse and Johnson & Johnson Human Performance Institute coupled with access to top researchers, hospitals and doctors.

TOP TRAINING FACILITIES

- U.S. Tennis Association (USTA) National Campus
 - \$100 million state-of-the-art training center
 - The largest tennis campus in the world with nearly 100 courts
 - 270,000-square-foot facility built on 64 acres opened in 2017
 - Where Lake Nona residents and professional athletes Jennifer Brady, Frances Tiafoe and Madison Keys train



USTA National Campus

- Lake Nona Golf & Country Club
 - Designed by premier golf architect Tom Fazio, the 18-hole championship course is favored by countless professional golfers and world-class athletes who call Lake Nona home
- Johnson & Johnson Human Performance Institute Global Headquarters
 - Where individuals and companies can learn to maximize energy and improve wellbeing, fueling higher performance and inspiring purposeful living
 - 31,500-square-foot building opened in 2019
- Lake Nona Performance Club
 - One of the nation's most comprehensive and thoughtfully curated fitness centers
 - Home to the world's only Chopra Mind-Body Zone built in partnership with Dr. Deepak Chopra and mindset training from quarterback Russell Wilson's Limitless Minds
 - 130,000-square-foot facility opened in 2021
- KPMG Lakehouse
 - 55-acre, state-of-the-art national training facility trains nearly 1,000 employees a week

SPORTS ENTERTAINMENT

- XL Soccer
 - Athletic complex with indoor multi-purpose fields for soccer, Futsal, lacrosse, flag football and volleyball
 - Coaches include former Manchester United player Alan Smith and World Cup Champion Sydney Leroux
 - 50,000-square-foot building opened in 2020
- Nona Adventure Park
 - Outdoor watersports venue with on-water cable system, inflatable obstacle course, on-land climbing tower, pro shop with equipment rentals and cafe
- Drive Shack
 - The company's first and flagship location
 - Golf entertainment destination with 90 playing bays, restaurant and bar and private event spaces
- Boxi Park
 - Two professional beach volleyball courts
 - Home to a beach volleyball academy, with programs for kids and adults, operated by Olympic gold medalist and Lake Nona resident Phil Dalhausser

TOURNAMENT DESTINATION

- Lake Nona is a sought-after destination for both professional and amateur athletic tournaments
- Previously hosted LPGA Gainbridge Tournament and LPGA Tournament of Champions at Lake Nona Golf & Country Club, the NCAA Men's and Women's Division I Championships at the USTA National Campus, and a USA Beach Volleyball exhibition at Boxi Park

FUTURE READY

- Startups in the leAD Lake Nona Sports & Health Tech Accelerator program are exploring new solutions in sports and health tech
 - The accelerator is a partnership with leAD Sports, the premier sports venture ecosystem inspired by Adidas founder Adi Dassler

LAKE NONA IS BUILT BY

PURPOSEFUL PLACEMAKING

There's so much to discover in Lake Nona. From top hospitals and research institutions to office buildings, autonomous shuttles, dozens of neighborhoods, community parks and miles of trails to explore. How does Lake Nona weave all of these different uses into one cohesive community where people live, work, play and learn? Overseeing community design and architecture, Lake Nona's development team at Tavistock is committed to the art of placemaking – a multi-faceted approach to community planning and design meant to strengthen the connection between people and the spaces they share.

PUBLIC ART PROGRAM

Lake Nona is the cultural home to dozens of art pieces that range in form from sculptures and murals to digital art and live performances. Artwork throughout the community comes from a mix of local, international, and master artists including JEFRE, Colette Miller, Tom Fruin, LeDania, Arturo di Modica, Henry Moore and Fernando Botero.



LAKE NONA SCULPTURE GARDEN

- The Lake Nona Sculpture Garden is a 50,000 square-foot outdoor space designed for the exploration and discovery of a distinguished selection of sculptures from one of the world's largest private art collections, The Lewis Collection
- Walking paths are surrounded by an inviting selection of palm trees and flowers as they wind their way through the garden's signature sculpture collection featuring the works of acclaimed artists such as Arturo di Modica, Fernando Botero, Philip Jackson, Henry Moore and Enzo Plazzotta
- The garden canopy is defined by nearly 300 hand-selected palm trees chosen for their unique features and arranged in waves of foliage as a nod to the curves of the adjacent Lake Nona Wave Hotel

THE BUILT ENVIRONMENT

- Tavistock thoroughly evaluates the opportunity with each new development project and asks questions about the physical structure, its tenants, placement, scale, landscaping and use of art to create an exceptional environment that can only be found in Lake Nona
- When it comes to placemaking, Lake Nona prioritizes spaces that act as animators to encourage activity and engagement such as memorable landscaping and artwork
- Buildings incorporate View Smart Windows that predictively tint in response to outdoor conditions while also offering health benefits for building occupants and the environment
- Buildings are designed with choice architecture to encourage healthy habits like taking the stairs

LAKE NONA IS AN ENTERTAINMENT HUB

From one-of-a-kind sports, arts and dining venues to nearly 1,000 community events each year, Lake Nona is a regional destination unlike any other. The community is home to a wide variety of restaurants, unique experiences and activities connected by miles of trails and the latest in autonomous transportation.

LAKE NONA TOWN CENTER

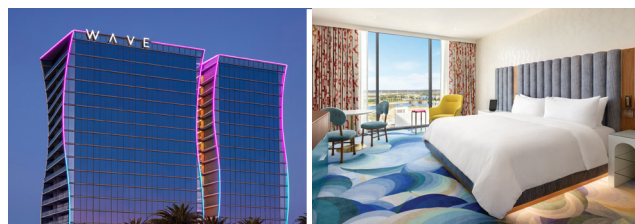
Lake Nona Town Center is a 100-acre, open-air urban district and regional entertainment destination featuring engaging events and a wide variety of shops, restaurants, business headquarters, hotels, and interactive artwork linked by green spaces and walkable vistas.



Lake Nona Town Center

HOSPITALITY

- Lake Nona Wave Hotel
 - The world’s most technologically advanced hotel integrates hospitality and technology at every touchpoint for a luxury lifestyle experience unlike any other
 - 234-room hotel features an extensive roster of technology partners, transformative dining options, one-of-a-kind art and design and wellbeing experiences



Lake Nona Wave Hotel

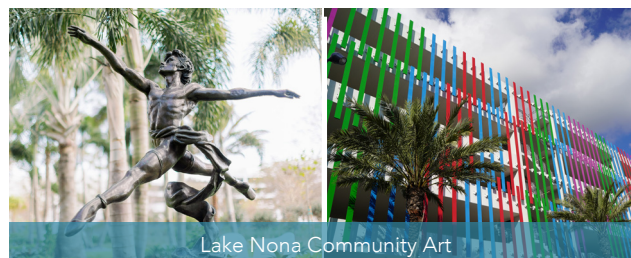
- Other hotels include a dual-branded Residence Inn and Courtyard by Marriott, and SpringHill Suites
- Three additional hotel projects in development including the Aloft Lake Nona (2023)

DINING

- Boxi Park is Central Florida’s only open-air park built using repurposed shipping containers that house different restaurant and bar concepts
- Dozens of national brands and local restaurants span a variety of cuisines from elevated comfort food and small plates to Italian and Turkish specialty restaurants, waterfront dining and an award-winning local brewery

PUBLIC ART PROGRAM

Lake Nona is home to dozens of art pieces that range in form from sculptures and murals to digital art and live performances. Artwork throughout the community comes from a mix of local, international and master artists including JEFRE, Colette Miller, Tom Fruin, LeDania, Arturo di Modica, Henry Moore and Fernando Botero.



Lake Nona Community Art

SPORTS ENTERTAINMENT

- XL Soccer: Athletic complex with indoor multi-purpose fields for soccer, Futsal, lacrosse, flag football and volleyball
- Nona Adventure Park: Outdoor watersports venue with on-water cable system, inflatable obstacle course, on-land climbing tower, pro shop with equipment rentals and cafe
- Drive Shack: Golf entertainment destination with 90 playing bays, restaurant and bar and private event spaces

COMMUNITY EVENTS

Lake Nona hosts nearly 1,000 community events each year from weekly yoga classes, live musical performances, hands-on workshops and a Saturday morning farmer’s market to annual, large-scale events like the Run Nona 5K, SpookNona and *Oh, What Fun!* holiday festival.

LAKE NONA IS AN

EPICENTER OF OPPORTUNITY

Contiguous to Orlando International Airport, Lake Nona is a unique commercial climate where businesses big and small are built to have a lasting impact. Lake Nona is home to more than 12,000 employees from the healthcare and aviation industries to professional services and hospitality.

CORPORATE CAMPUSES

- Disney Regional Campus (2026)
 - Future home to 2,000 Disney Parks, Experiences and Products employees
 - 60-acre campus will include up to 1.8 million square feet of office space
- Amazon Robotics Distribution Center
 - 130-acre, 2.3 million-square-foot facility
- VOXX International Corporation
 - Global supplier of automotive and consumer electronics products worldwide
- KPMG Lakehouse
 - 55-acre, 800,000-square-foot training facility with 800 lodging rooms opened in 2020
 - \$450 million campus, KPMG’s largest capital investment ever



KPMG Lakehouse

TECHNOLOGY

- Verizon 5G Innovation Hub
 - Lab space where innovators test how 5G can enhance industries such as health care, technology, autonomous mobility, health and wellness, education, retail and sports
- leAD Lake Nona Sports & Health Tech Accelerator
 - Designed to attract the most promising early-stage tech start-ups from around the world
 - The accelerator is focused on future of living solutions covering sports and health tech, smart cities, and the future of nutrition
 - leAD Sports is the premier sports venture ecosystem inspired by Adidas founder Adi Dassler
- Partnership with Hitachi America to better understand, improve and optimize movement throughout the community

AEROTROPOLIS

Lake Nona is part of an Orlando aerotropolis, an economic development region that harnesses the opportunities aerospace (airport/spaceport) bring to a region. Lake Nona is contiguous to Orlando International Airport (MCO) encompassing 37 square miles of land under control of two entities, the Greater Orlando Airport Authority and Lake Nona developer and land owner, Tavistock.

MOBILITY LEADERS

- Beep Mobility Solutions Headquarters
 - Operator of Move Nona, the country’s largest and longest-running single-site autonomous vehicle fleet
- BBA Aviation/Signature Flight Support
 - Leading global aviation support and aftermarket services provider
- dnata USA Headquarters (2022)
 - State-of-the-art office will support the company’s U.S. operation that provides ground, passenger, and cargo handling services to more than 60 airlines at 26 airports across the country
- SIMCOM Aviation Training (2023)
 - 90,000-square-foot, state-of-the-art global headquarters and training facility
 - Five-acre site featuring 12 full-flight simulators will train 10,000 pilots per year
- Lake Nona Vertiport (by 2025)
 - Future home of the country’s first vertiport hub for electric aircraft capable of helicopter-style take-off and landing
 - Partnership with Munich, Germany-based aircraft manufacturer, Lilium



Lilium Lake Nona Vertiport

LAKE NONA®



DID YOU KNOW?

Contiguous to

ORLANDO INTERNATIONAL AIRPORT,
Florida's largest and busiest airport

Home of the

U.S. TENNIS ASSOCIATION NATIONAL CAMPUS
the largest campus in the world with nearly 100 courts

40% of land is conserved



At 17 square miles,
**LAKE NONA IS NEARLY THE
SIZE OF MANHATTAN**



Home to the

**FIRST STAND-ALONE
CHILDREN'S HOSPITAL**

in Orlando

FIRST gigabit community in Florida
with a **5G NETWORK**

Lake Nona Wave Hotel is the

**WORLD'S MOST
TECHNOLOGICALLY ADVANCED HOTEL**

Home to the country's

LARGEST AND LONGEST RUNNING
autonomous shuttle fleet

Robust public art program home to

ICONIC ARTWORK

from a mix of local, international, and world-renowned artists

Continually ranked among the country's

FASTEST SELLING COMMUNITIES

ANCHORS

